









# PROPOSAL FOR DEVELOPMENT

WORKS AT IMMANUEL CHURCH SCHOOL PGLUSS

## WORK SCHEDULE

A GANTT CHART

WORK		COMPLETION TIME IN WEEKS						
1	Bore hole well							
		ACTUALS						
2	Desludge chamber							
3	Water Tower							
4	Refurbish bathrooms							
								
5	Final inspections							
								
		0	1	2	3	4	5	6

SIX (6) WEEK PERFORMANCE SCHEDULE

FIVE (5) WEEK INTENSIVE

NOTE: ITEMS 1, 2 & 3 COMMENCES AT DAY 1

COURTESY OF PLGUSS - ENGINEERS

## **ASSESSMENT RECOMMENDATION REPORT:**

### **1. Introduction**

With the **PARKER GROUP OF LIBERIA UNITED FOR SOCIAL SERVICE**, we did the assessment Of the Immanuel Christian Academic (ICA) School with the Methodology and Coverage Area: For the purpose of credibility and reliability, this needs assessment was conducted. By using quantitative and qualitative approaches where quantitative and qualitative data was collected in various forms including key informant interviews, focus group Discussions (FGDs) and households' surveys to determine the current situation of WASH facilities in the area such as Bore hole well location, and to find safety strategies to prevent school pupil from going around the drilling site, to take dimension and find location of place that will be constructed for WASH propose. After the Site assessment, the representative of the BTFS (Isaac J.S. Davis) and **PARKER GROUP OF LIBERIA UNITED FOR SOCIAL SERVICE** (The construction) did the graphic design and estimate together, and it was agree.

### **2. Description:**

**The below mentioned Activities is descript the project and it implementation with Diagram.**

- Drilling of Borehole well, Water tower, Dislodge chamber, Refurbish Latrine and following is an outline of the tank; Submersible pump and other plumbing accessories process (steps and activities) in a chronological order: Site clearance and foundation layout; drilling of borehole well?
- Excavation of the foundation, and the Construction of the Water tower Laying and blinding of hardcore Construction of the concrete slab reinforced with heavy gauge weld mesh and Y8 bars;
- Construction of Dislodge Chamber, using single masonry layer reinforced with barbed wire placed after every 2 layer. Internal plastering of wall and floor. Blinding of hardcore Construction of the concrete slab reinforced with heavy gauge Steel.
- Construction of the Refurbish Latrine roof cover, which start with setting up the Foundation, Substructure, External and internal plastering and/or keying the masonry joints, Plumbing: construction of water draw off points cum hand washing facility, including drain-off outlets, accessory installation, installation of guttering system – including simple foul-flash device Squatting and Sitting latrine, Tile Laying, Painting.

We have the attached borehole well, Water towel, Dislodge chamber or Septic tank, and Refurbish Plan in detail.

### **4. Conclusion:**

The above mentioned Assessment provides baseline information for us to be able to do the design of the WASH facilities and planning of the project.

## 5. Recommendations:

**The following activities are recommended for humanitarian interventions:**

- BTFS should do the Procurement of the Material needed for the project at the BTFS School.
- Provision of basic and consumable hygiene kits.
- Conducting awareness sessions on key hygiene messages.
- Provision of water filters to affected community for safe drinking water. Chlorination of the existed water sources.
- Conducting cleaning campaigns in public places.
- Rehabilitation or constructions of protected
- Connecting piping system from the LWSC tension line to ICA school.
- Community Led Total Sanitation (CLTS) activities for HHs who do not have latrines.

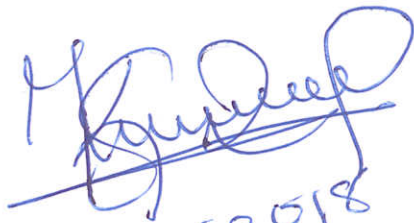
From: Isaac J.S. Davis

Cont. Site Supervisor

BOWIER TRUST FOUNDATION

SWITZERLAND (BTFS)

Liberia, SD cooper road



16/02/2018



## Assessment Report

February 2018

A one day assessment at the ICA project site and its environ has been completed with **Parker Grout of Liberian United for Social Service, (PGLUSS)** Isaac Davis (BTFS Technical Supervisor), L.B. Sonnoh (volunteer Engineer Student) and Hamnson B. Gaye (Admin). The assessment was on possible demolition of the water facility, building and relocations of septic tank, borehole as well as water towel location and possible solution on the job that has to do with credibility, security and control of students, community dwellers and others, that may not interfere with the job. There were site visit of surrounding wells on the quality and quantity of the water produced and questions asked to neighbor's concerning waste management.

### Observation

1. The washroom remains in the same location, due to insufficient space.

### Action Points

1. PGLUSS submits a concept design, cost and cost breakdown of the project, including work plan before the end of February.
2. Isaac Davis work in collaboration with PGLUSS in drafting the concept design to be forwarded to Mr. WALz.

Signed By: \_\_\_\_\_

  
Hamnson B. Gaye  
Administrator.

**Bowier Trust Foundation Switzerland  
Liberia Management Team  
ICA Project Position Statement**

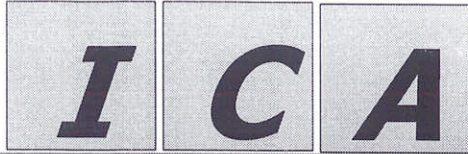
Base on mutual agreement signed between Immanuel Christian Academy (ICA) and **Bowier Trust Foundation Switzerland (BTFS)** to partner, whereas BTFS finance and carry out water, hygiene sanitation and infrastructure project for the benefit of the local community BTFS is hereby confirmed:

That the septic tank will be empty biannually by the project owner ICA through **INC Sanitor and Services Cooperation**, Paynesville, Liberia, on a need based, where the feces will be transferred to the biological treatment site for processing into high quality fertilizer to be used by farmers.

We also confirmed and approved the concept design and breakdown submitted by **Parker Liberia Group United for Social Services (PLGUSS)** which was reviewed and recommended.

Signed By:  \_\_\_\_\_  
Hamnson B. Gaye  
**Administrator.**

Approved By: \_\_\_\_\_  
Mary D. Cummings  
**Team Leader.**



**IMMANUEL CHRISTIAN ACADEMY**

**OFFICE OF THE PRINCIPAL  
0770-198950**

February 17, 2018

**Bowier Trust Foundation  
S. D. Cooper Road, Paynesville  
Liberia**

Dear Mr. Waltz:

The Pastors of the Immanuel's Church and Board of Directors of the Immanuel Christian Academy, having reviewed the proposal to construct a Water Tower, Washroom and sewage projects express heartfelt gratitude and appreciation for the level of work being done thus far that will lead to the implementation of these projects.

We are in full agreement with the proposal and look forward to its implementation.

Thanks for your undertaking in the interest of the people of the S. D. Cooper Road, Community and Liberia at large.

Sincerely yours,

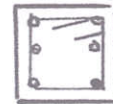
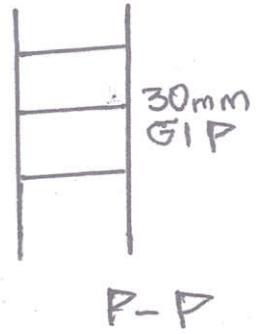
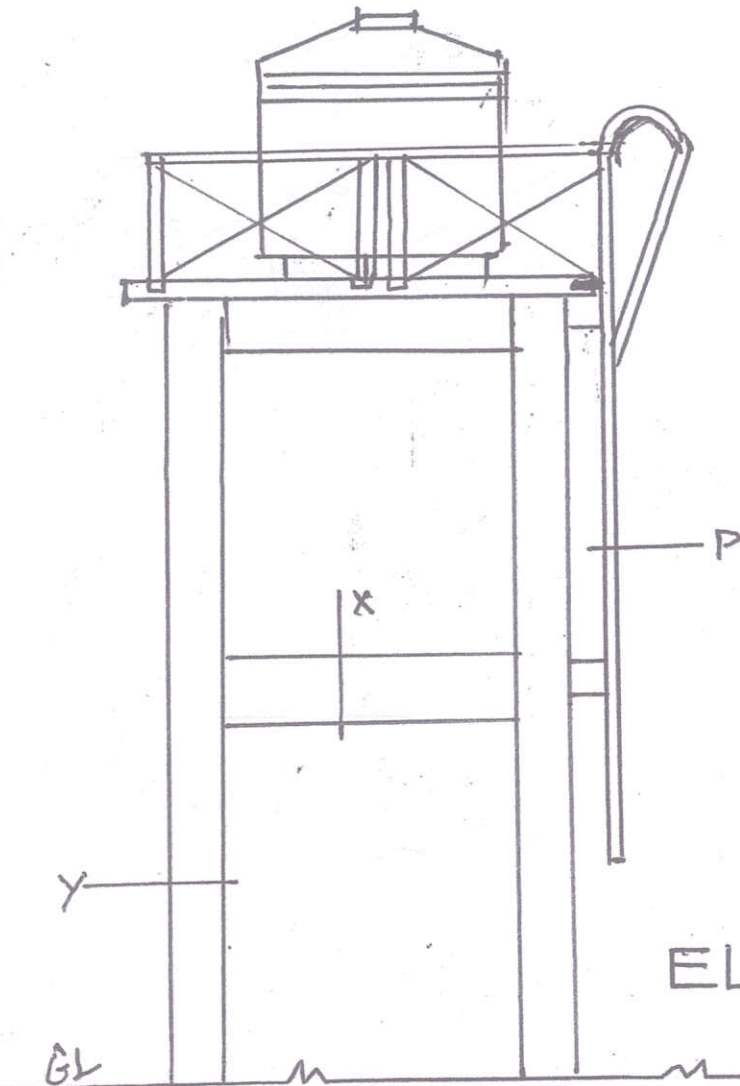
Rev. Paul C. Mitchell

Principal

ICA

*"Preparing the hands and mind for service"*

# TOWER



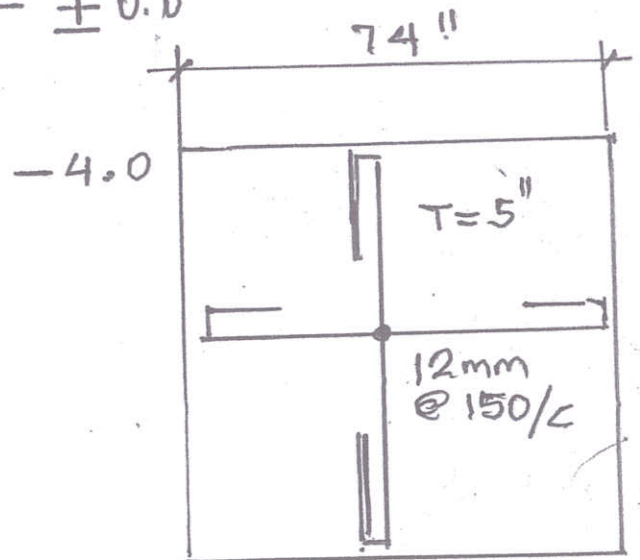
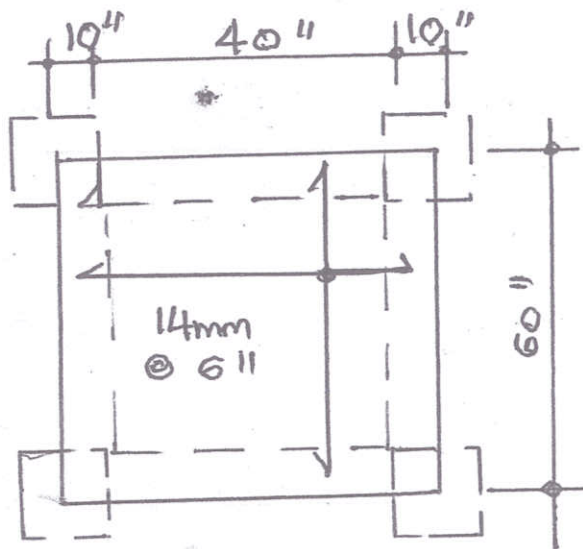
250 X 250  
W/ 6"  $\phi$  12

Y-Y



150 X 300  
W/ 4  $\phi$  12

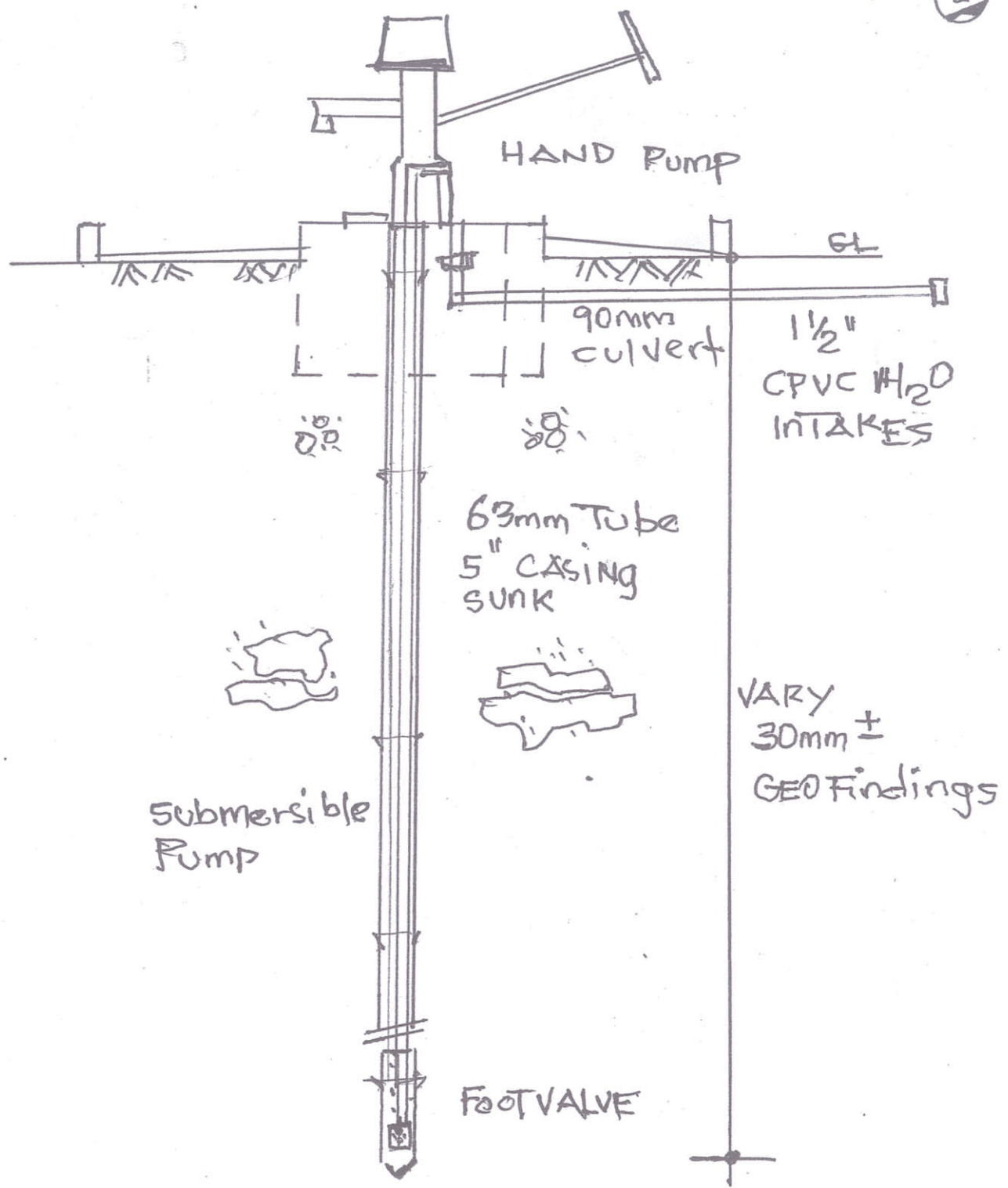
X-X



TOWER BASE

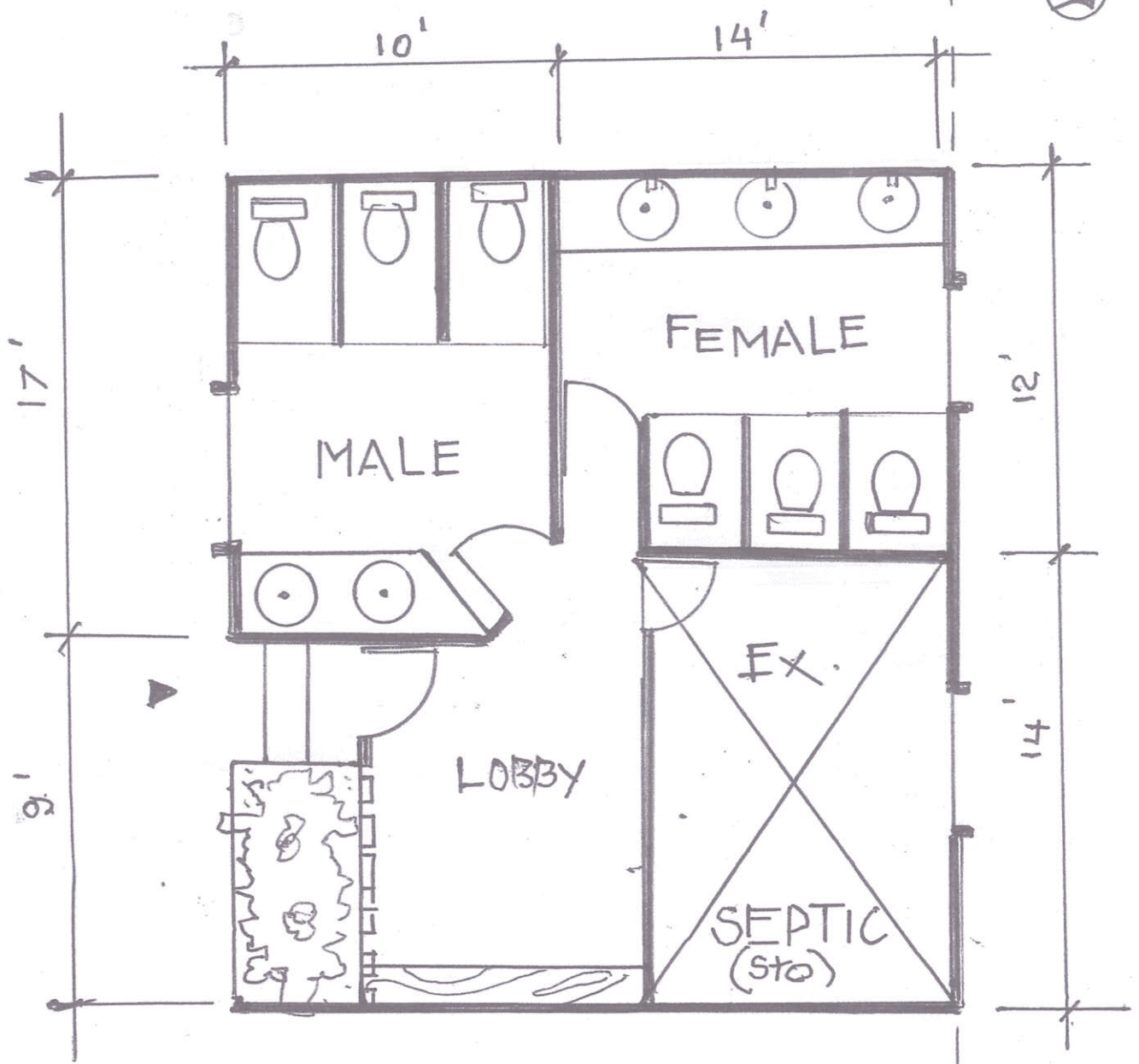
TOP SLAB



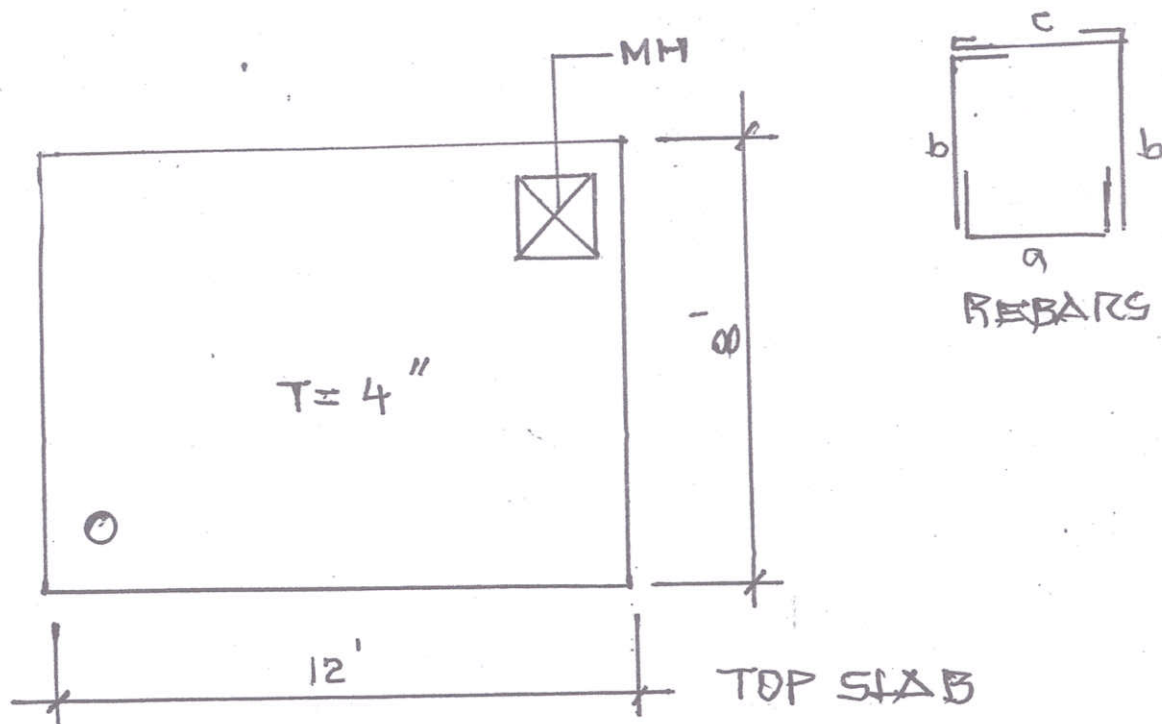
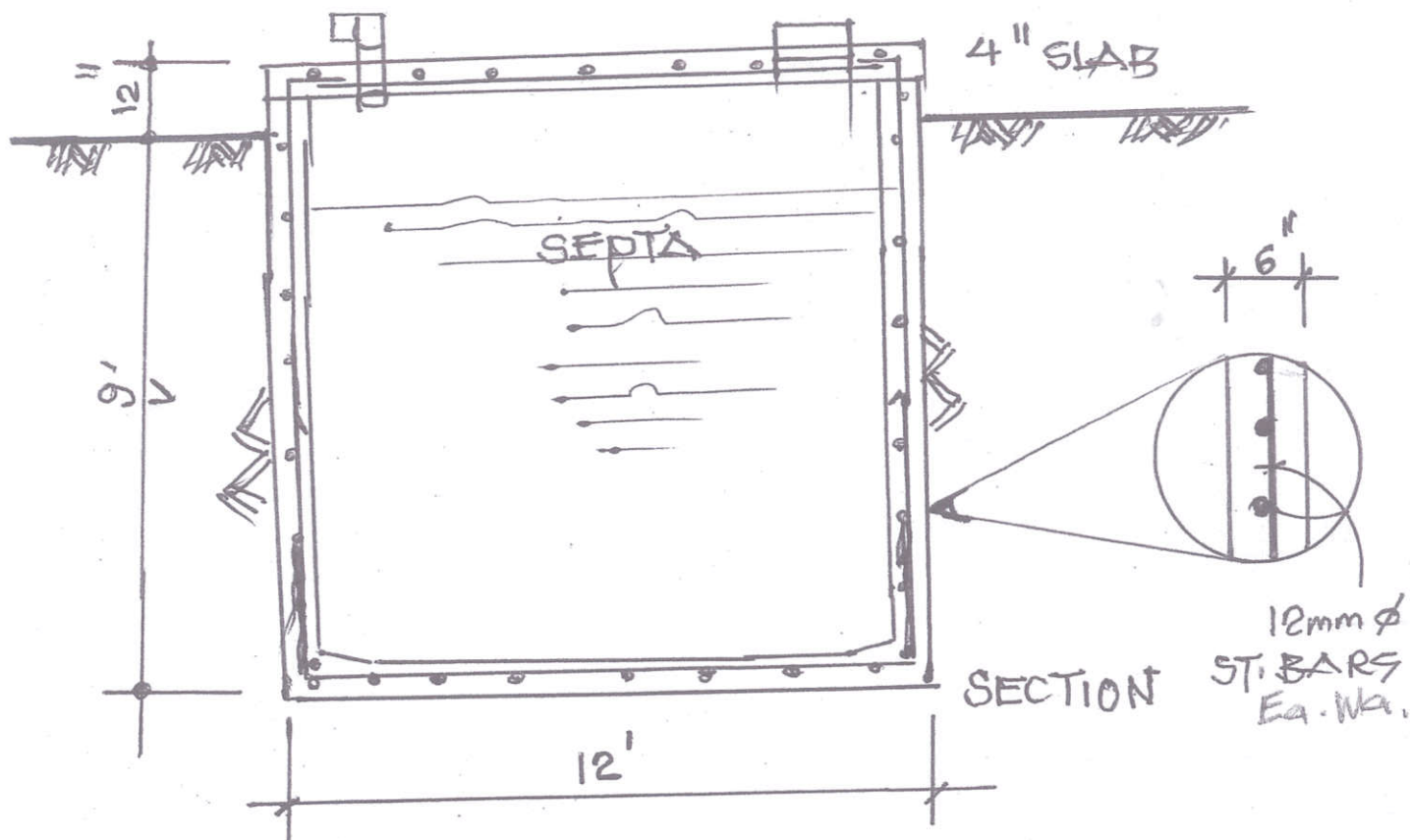


BORE HOLE  
WELL





PLAN OF NEW  
BATHROOM (ALTERATIONS)



DIGESTIVE DESLUDGE  
TANK